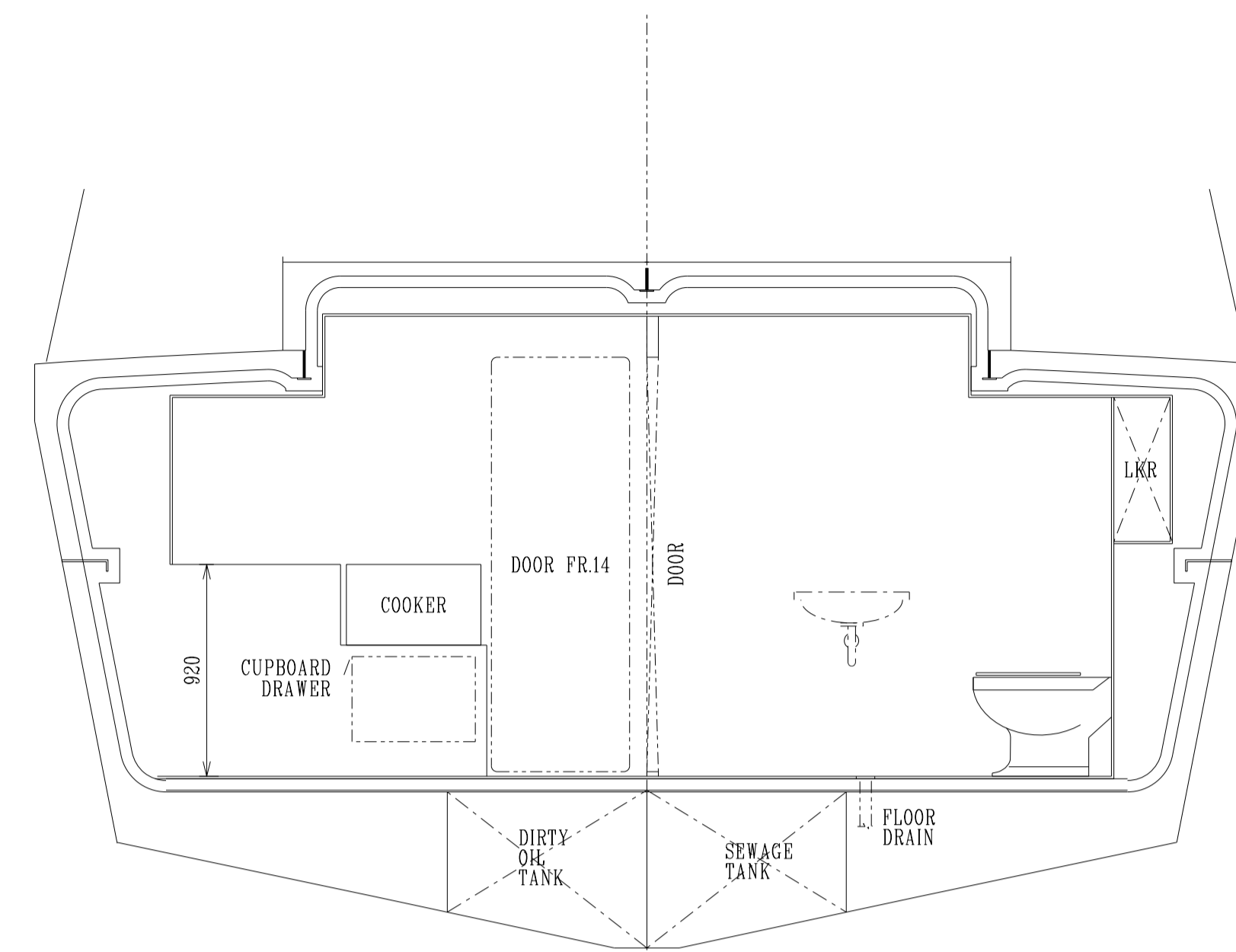
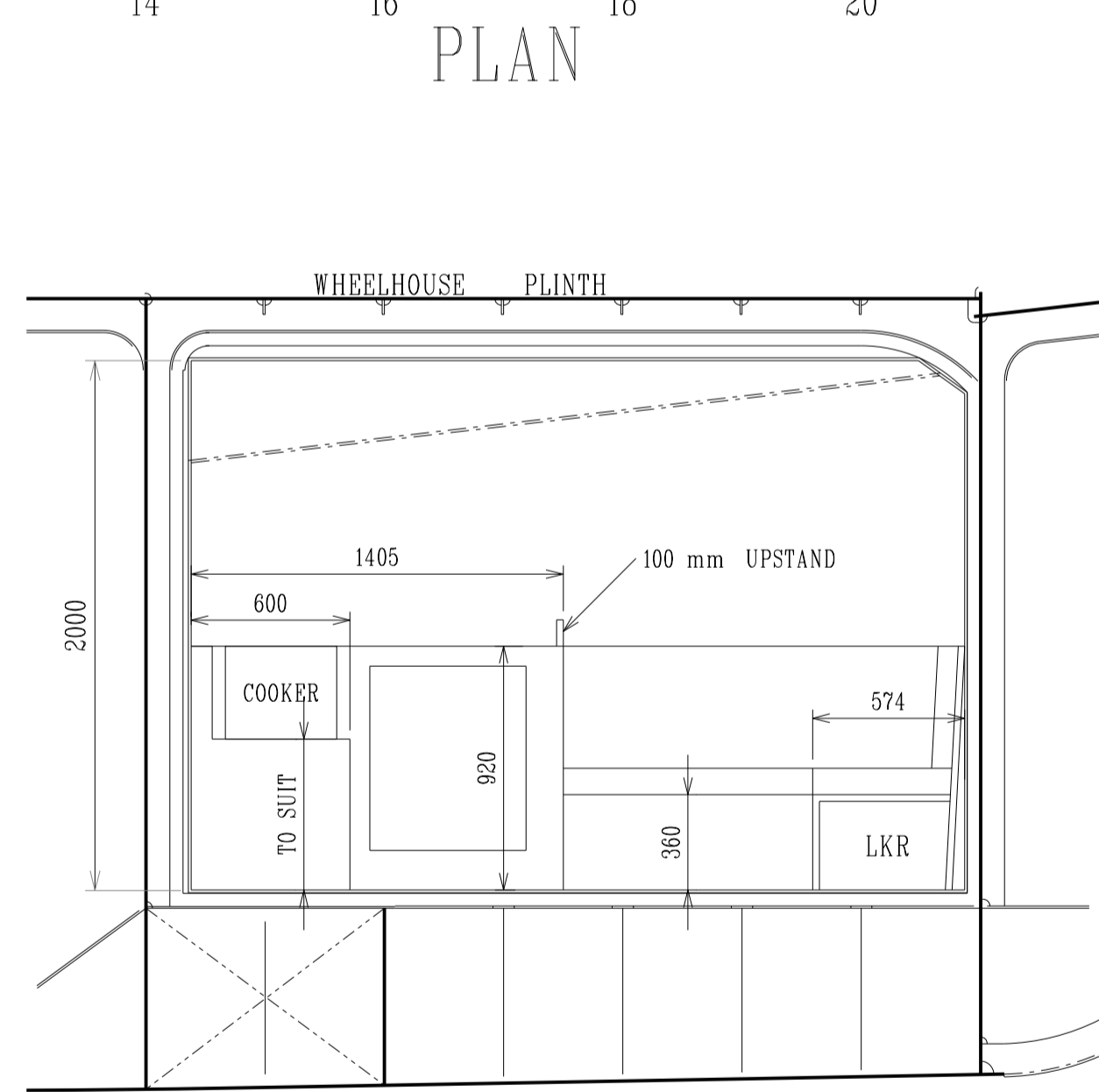


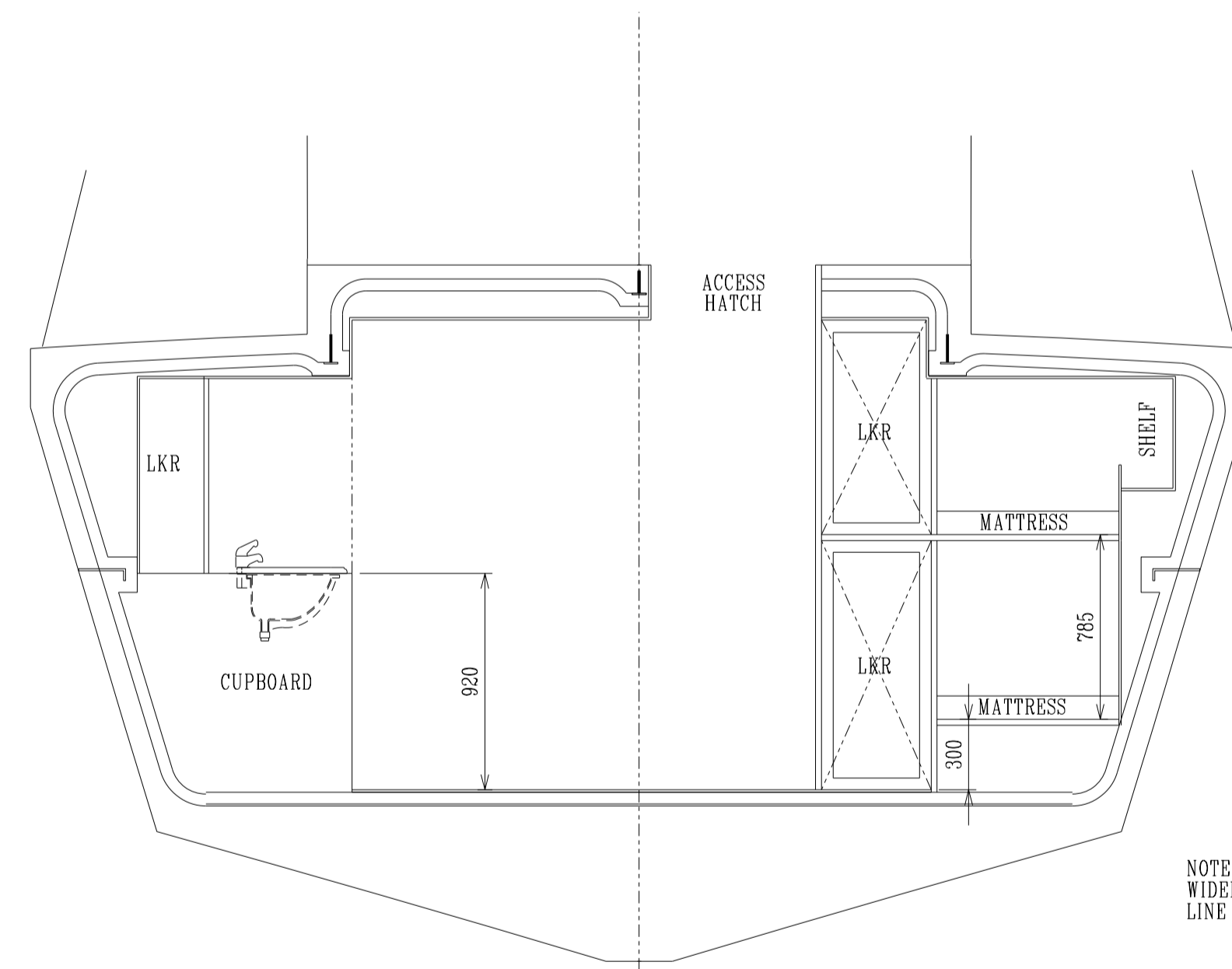
CENTRE LINE PROFILE
LOOKING STBD



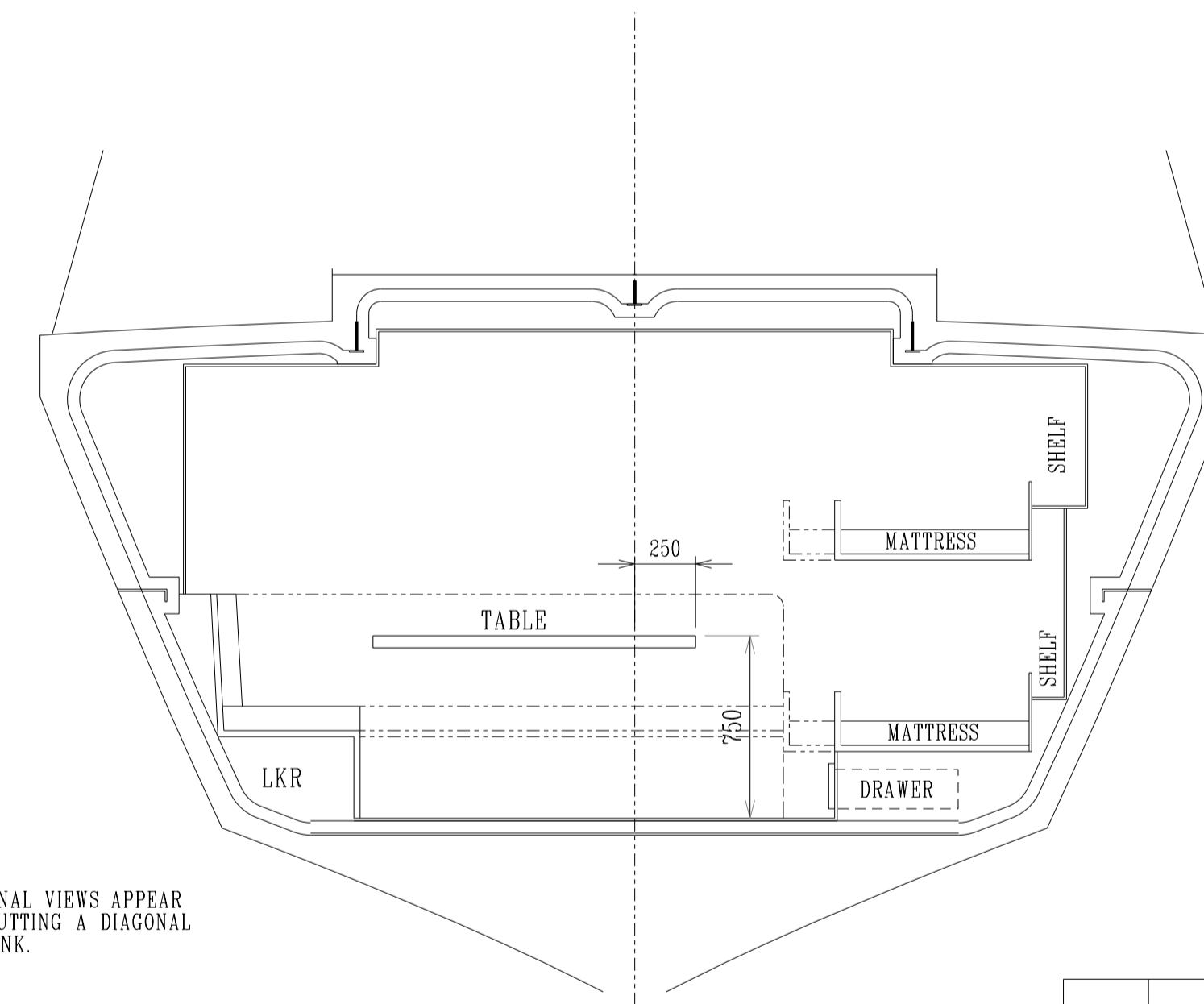
FRAME 15



CENTRE LINE PROFILE
LOOKING PORT



FRAME 17



FRAME 19

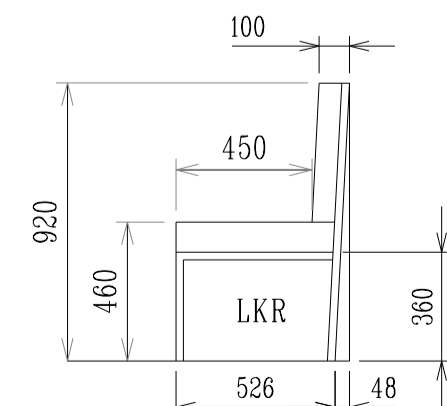
ACCOMMODATION

CABIN (SECTION A1 OF SPECIFICATION)

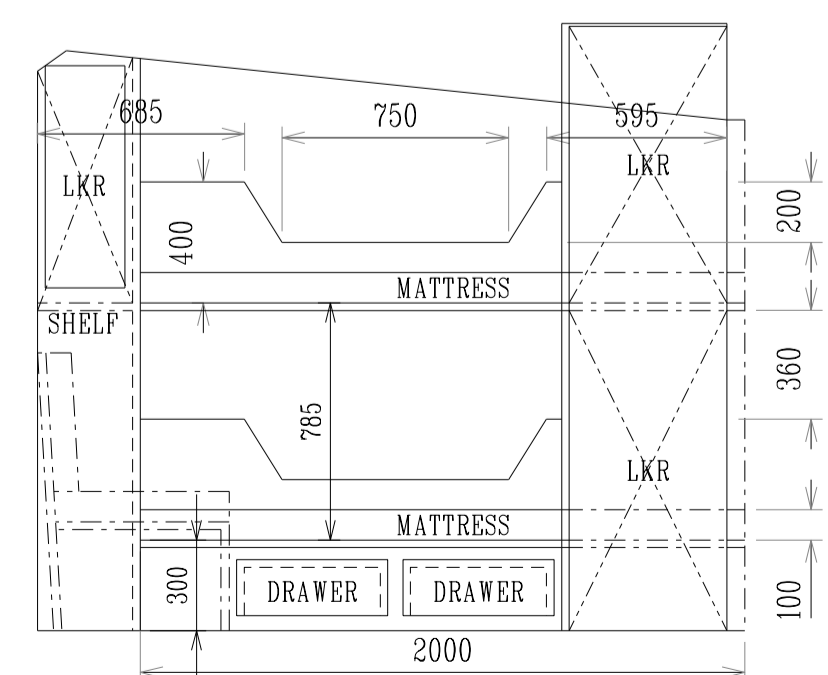
- CABIN TO BE FITTED OUT AS FOLLOWS:
- 2 BERTHS WITH DRAWERS UNDER, WITH DEEP LEEBOARDS.
- 2 WARDROBES WITH SHELF, HOOKS AND RAILS.
- 1 MIRROR WITH LIGHT.
- 2 HAT AND COAT HOOKS.
- 1 WASTE BIN.
- 1 BOOKRACK WITH RETAINING BAR.
- 2 BERTH LIGHTS.
- 1 SET LINED CURTAINS AT EACH BERTH ON NYLON CURTAIN RAILS.

WASH PLACE AND TOILET (SECTION A2 OF SPECIFICATION)

CREWS WASH PLACE TO COMPRISE ONE WASHBASIN COMPLETE WITH PRESSURISED HOT AND COLD WATER SUPPLY A MARINE VACUUM TOILET AND A SHOWER MIRROR, SOAP HOLDER TO BE PROVIDED.



SEAT DETAIL



PROFILE SQUARE ON TO BUNKS

REV.	MODIFICATION	BY	DATE	CHKD.	DATE
APPROVED BY:-					
DATE:-					
TITLE:- 13.0 m MOORING BOAT ACCOMMODATION LAYOUT			REF:- 2460 - 0109		
DRAWN BY:- IAN			DRAWING NO :- 10		
CHECKED BY:- DSC			REVISION :-		
DATE:- 26/5/09			SCALE:- 1:25 @ A1		
DATE:- 26/5/09					
THIS DRAWING AND THE INFORMATION IT CONTAINS ARE THE PROPERTY OF MACDUFF SHIP DESIGN LTD. IT IS NOT TO BE TRACED COPIED OR PUBLISHED WITHOUT OUR WRITTEN CONSENT OR MISUSED IN ANY WAY.					
MACDUFF SHIP DESIGN Ltd. LOW SHORE MACDUFF ABERDEENSHIRE SCOTLAND AB44 1RE TEL 01261 833825 FAX 01261 833835 EMAIL info@macduffshipdesign.com					
